



www.iaks.sport

International magazine for sports,
leisure and recreational facilities

55th year

ISSN (Print): 0036-102X
ISSN (Internet): ISSN 2198-4271

1/2021

SPORTS HALLS AND ARENAS



Location
Bordeaux, France

Client/operator
Bordeaux City Council

Architects
Marjan Hessamfar & Joe Vérons
architectes associés
FR – 33000 Bordeaux
www.hessamfar-verons.fr

Author
Marjan Hessamfar & Joe Vérons
architectes associés

Photos
Arthur Pequin

Official opening
2018

Construction costs
EUR 2.5 million

SPORTS ACTIVITIES IN FORMER COVERED MARKET

ALICE MILLIAT GYMNASIUM IN BORDEAUX

The old Victor Hugo covered market has been converted into a sports facility by architects Marjan Hessamfar & Joe Vérons. A multi-purpose gym, a dojo, and a dance and fitness studio occupy the entire ground floor. Special attention has been paid throughout to the lighting, transparency and spaciousness of the sports areas.

With the Alice Milliat Gymnasium project, Bordeaux City Council wanted to offer the neighbourhood a new high-quality sports facility and shops, while enlivening the existing façades of the building. The vast complex built in 1962, comprising a market, sports centre and car park on the Cours Victor Hugo, suffered from a lack of

visual clarity when viewed from the Cours Victor Hugo and from a lack of connection between the interior of the building and the street.

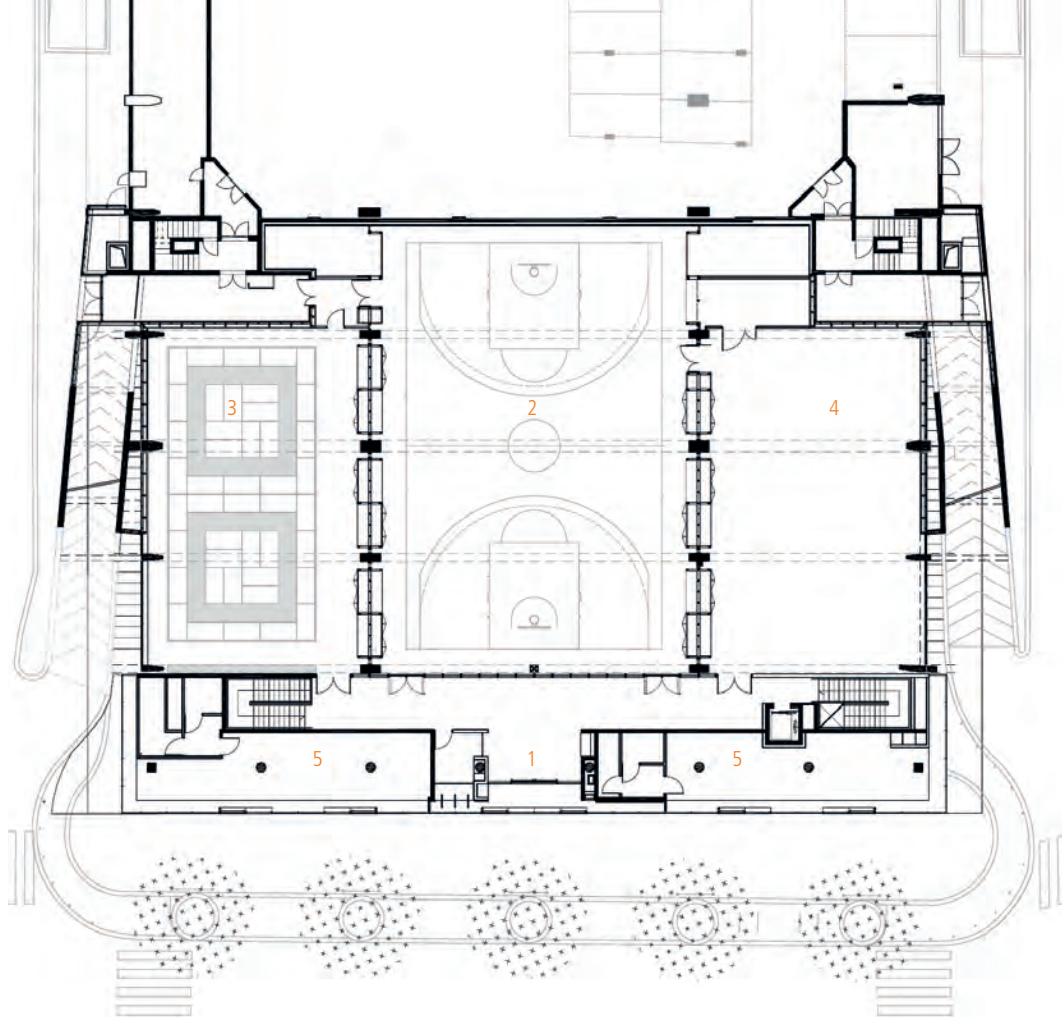
The design pursues three main intentions: to bring more natural light into the heart of the building; to make the sports facility more visible,





Ground floor plan

- 1 Reception area
- 2 Multi-purpose sports hall
- 3 Dojo
- 4 Dance and fitness studio
- 5 Shops



while remaining sympathetic to the original architectural design; and to reclaim the public space immediately in front of the building.

Glass box

In the gap created by the demolition of the existing market and shops, the architects decided to install a glass box. The fragility of this entirely glazed structure is in marked contrast to the stark concrete architecture of the existing building.

The attention paid to the design of the glass box, and particularly the use of ultra-clear glass and refined materials such as brass and wood, gives the gymnasium a touch of sophistication.

Sports areas

The spacious double-height sports hall directly behind the reception area occupies a central position at the heart of

the building. It opens onto the reception area and receives abundant natural light thanks to the mesh façades and the windows in the upper section of the lateral partition walls, which are sound-proofed and thermally insulated.

On either side of the multi-purpose hall, the dojo and the dance and fitness studio have the same volume and the same thermal and sound insulation systems. The lower parts of the partition walls between the sports halls have storage spaces and wooden benches, which also contribute to the acoustics of the room. The dojo is equipped with a flat wooden shelf where shoes can be stored before users step out onto the tatami floor.

The façades overlooking the street admit abundant natural light. To leave as much room as possible for the sports facilities, the changing rooms are in the basement. They are accessed via a lift and two staircases on the east and

west sides of the complex. The four changing room and sanitary units are assigned to the activity areas. All facilities are directly adjacent to a large room containing lockers.

Signage

The choice of the colour blue for the floor forms an ideal background for signage that reflects the identity of the facility, symbolised by directional signs inspired by a sports track, which curves along the walls and continues on the floor, clearly showing the layout of the sports areas and changing rooms. The design of the stairs and the brass used on the steps provide a sense of continuity with the rest of the building.

Urban continuity

The façade is part and parcel of the redesigned pedestrian experience in this protected area of Bordeaux. The main

façade features shops intended to re-energise the street. The position of the entrance to the sports hall, with its sliding glass doors, in the centre of the façade on the Cours Victor Hugo, provides a strong sense of continuity from one section to the next. During the day, the central position of the main entrance makes it easy to identify, and by night the glass box becomes perfectly smooth again, appearing to passers-by as a transparent block of great simplicity nestling under the imposing concrete structure.

Following on from the shops, the sports facility has a similar façade, but the fact that it is set back from the Cours Victor Hugo gives it a greater sense of privacy. The façade of the car park above with its iconic car is very well known among the residents of Bordeaux and therefore creates a sense of identity.